



Errors as well as misprints and changes reserved. No guarantee is given for the accuracy and completeness of the information. The product images in this document may differ from the original. This document is not a contractual offer and only serves to provide non-binding information.

The nora brand and all other registered trademarks used in this document are registered to nora systems GmbH or its affiliates or subsidiaries. Other labels used here are trademarks of their respective owners.

nora systems, Inc.
9 Northeastern Blvd.
Salem, NH 03079
T: 800.332.NORA
T: 603.894.1021
info-us@nora.com
www.nora.com

04/2023

norament arago

nora[®]
by **Interface**[®]



Create calm with the natural appeal of norament[®] arago[™]

From the geographic relief of mountain peaks to the exposed stonework of contemporary spaces, natural textures and colors bring harmony to their environment. norament arago captures this elemental appeal in a surface that supports your most heavily trafficked areas. Promote an atmosphere of calm in even the busiest hallways and public entryways with norament arago.

Timeless texture, lasting performance

norament arago's layered, geologic forms balance the enduring appeal of natural stone with the durability of rubber flooring. Designed to meet modern performance demands, norament arago offers unrivaled sound absorption, slip resistance, underfoot comfort and ease of maintenance for a classic, long-lasting floor.



PRODUCT NORAMENT® ARAGO™ NTX™
COLOR 5175 UNITY INSTALLED DIRECTIONAL



PRODUCT NORAMENT ARAGO WITH BEVELED EDGES COLORS 5171 FORTITUDE, 5181 COMFORT INSTALLED DIRECTIONAL



Experience nature's elegant tones

norament arago offers a stonelike relief structure and a soothing, gray-toned palette. Explore natural rich, dark shades to soft neutrals. Each tile is unique. Marbling and fine granules blend seamlessly through each layer for a rubber flooring that's full of natural dimension and interest.

Discover the harmony of design and performance that goes beyond the surface with norament arago.

norament arago

Art. 3118  12
 □ ~39.53" x 19.76" (1004 mm x 502 mm)

norament arago with beveled edges

Art. 3119  12
 □ ~39.23" x 19.57" (998 mm x 497 mm)

norament arago nTx

Art. 3122  5
 □ ~39.53" x 19.76" (1004 mm x 502 mm)


 ~3.5 mm

 ~3.5 mm

Product Construction	Homogeneous Rubber Tile
Class / ASTM F1344	Type IB and Grade 2
Surface Type	Relief structure
Indoor Air Quality	GREENGUARD Gold
Full Life Cycle Carbon Emissions	CDPH 01350 Compliant
LEED v4	Carbon Neutral Floors™
	Contributes to multiple IEQ and MR credits

Variations in color and design, even within one production batch, define the product's aesthetic character.

 Contact your sales representative or visit nora.com for QuickShip options

 Available as *norament® arago™ nTx™*. Contact your sales representative for details and lead times.

Multiple installation options, including high moisture solutions.

View details and the full product specification at nora.com.

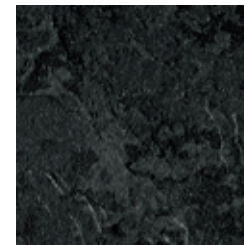
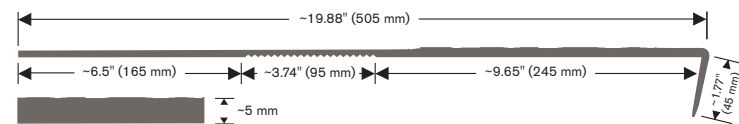
Installation Method



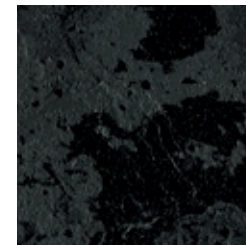
DIRECTIONAL

norament® arago™ stairtreads

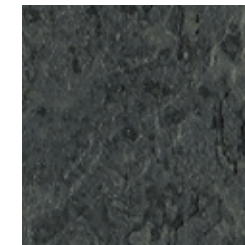
 6
Art. 3170 - width ~50.59" (1285 mm)
Art. 3171 - width ~63.54" (1614 mm)
Art. 3172 - width ~78.89" (2004 mm)



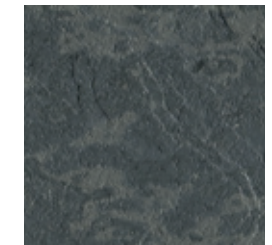
5170 STRENGTH



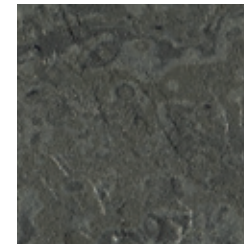
5171 FORTITUDE 



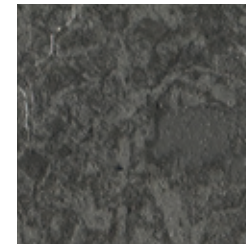
5172 STAMINA 



5173 FERVOR



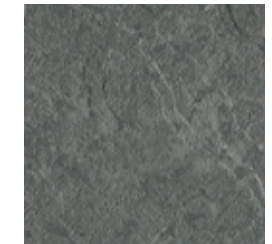
5174 HARMONY



5175 UNITY 




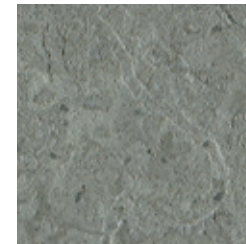
5176 PEACE



5177 BALANCE 



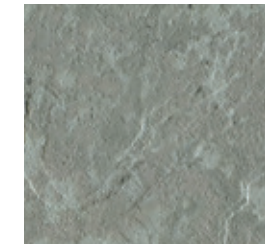
5178 CALM 



5179 TRANQUIL 



5180 SERENE



5181 COMFORT

Welding is not required unless specified. View weld recommendations at nora.com.



Why nora® rubber flooring?



Reduced Maintenance
Little more than water needed - no finishes, coatings or harsh chemicals necessary.



Quiet Acoustical Performance
Attenuate noise pollution.



Durable Surface
Withstand extreme stress from heavy rolling loads and wheeled traffic.



Ergonomic Design
Add comfort underfoot, reducing foot and leg pain.



Superior Slip Resistance
Help to create safer spaces.



Supports Infection Control
Disinfect completely due to a dense, non-porous surface.



Cradle to Cradle Silver*
Certification of whether a product is safe, circular and responsibly made.



Carbon Neutral Floors™
Third party verified carbon neutral throughout its entire life cycle as part of Interface's Carbon Neutral Floors program. Learn more at interface.com/carbonneutral



GREENGUARD Gold
Certified low VOC emissions.

Integrated system

nora and Interface cover every area of your building – all from a single source. Create harmonious, space-specific design with our system of soft and resilient floor coverings, including special floorings, stair treads and accessories.

Outstanding service

From design to post-installation, we have the experts to support your project at every step and can even be a valued resource for your organization's sustainability mission.

For additional information regarding usage in recommended applications, contact us or visit nora.com.

ORDER SAMPLES
Online at www.nora.com
Call 1.800.332.NORA
Email your sales rep or customer support specialist

BROWSE NORA.COM

- Design your floor with Interior Design Studio
- Find technical and environmental documents
- Access BIM/Revit Files

Product warranty

We will be happy to supply specific test results on all nora systems, Inc. products.

nora® by Interface® Product Warranty – Americas (Excerpt)

nora systems, Inc. (nora) warrants the following nora® brand products (collectively, the "Warranted nora Brand Flooring Products") as set forth below: norament® and noraplan® rubber flooring, norament rubber stairtread (excluding visually impaired strips), accessories (excluding visually impaired strips), nora® nTx™ 020 bond enhancer and adhesives, and the conductivity of its Electrostatic Dissipative ("ESD") flooring system (norament ed and noraplan ed flooring and adhesive).

This limited warranty and the applicable Installation Instructions and Maintenance Guidelines are subject to change at nora's discretion and without notice. Please contact nora or visit the nora.com website for the latest versions. For additional information regarding usage in recommended applications, please refer to www.nora.com or call 1-800-332-NORA. Warranty periods commence on the date of invoice of the product to the original end-use customer.